



State Line UMC

February 2019

# Without Borders

## Message from the Pastor

Greetings in the name of our Lord and Savior, Jesus Christ!

A little less than two months ago, I would never have thought in my wildest dreams that I would come out of retirement and be appointed as your interim pastor for the next six months. Before saying “Yes,” I needed to pray first, and I consequently accepted God’s call to be your pastor in this time of transition since your beloved Pastor Kris accepted his call. God has a plan! May we faithfully trust and follow where God is leading us! “Not to us, O Lord, not to us but to your name be the glory, because of your love and faithfulness.” (Psalm 115:1)

Early on in my seminary studies, I read a book by Daniel A. Brown entitled *The Other Side of Pastoral Ministry*. In his book he compares the life of a church with that of a river or lake. This analogy sparked my attention, as fishing with my dad and sons has been a favorite pastime of mine over the years. Brown says, “a church must be an ongoing process like a river, not a static place like a lake. Both a river and a lake provide scenic beauty, but they work very differently. Lakes are fairly limited in what they can do; rivers however go somewhere and transport people to new destinations.” In other words, by viewing our church as a river, we must focus upon the process of moving people along in their spiritual journeys and making disciples of Jesus Christ. This is our continuing mission!

During my first month here, I have concentrated upon listening and learning all I could about our church, our people, our community, our ministries, our vision, our joys, and our concerns. My early assessment is that God is working through the hearts of our community faith in some exciting, yet challenging ways. As your new “old” interim pastor, my prayer is that together we become more and more “united with Christ, one in spirit and mind” and see what God will do. “All things are possible for one who believes.” (Mark 9:23)

Bea and I thank you for your warm welcome and hospitality. We feel “right at home” and an honor to be your pastor. I look forward to seeing you on the river! Blessings! Pastor Chris (aka PC)

### Encounter God

Share God’s love with our church family and invite friends and neighbors.

Wednesday mornings at 9:30, ladies meet to **quilt and sew** together. Contact Linda Baker for more details.

Sunday Morning  
9:00am Sunday School  
10:00am Fellowship Time  
10:15am Worship

### Grow in Faith

You must be intentional in growing your faith and in helping others do the same.

The **State Line UMC Youth Group** meets each Wednesday evening at 6:30pm. 7<sup>th</sup> through 12<sup>th</sup> grade students throughout the community are invited to participate.

**Bible Study** with Pastor Ruth is held Thursday mornings at 9:30am.

### Serve in Christ’s Love

Jesus gave us the example of helping others and charged us with sharing the faith.

Our **Outreach Team** is committed to help those most in need in our community. The entire congregation is gathering food to assist those living at the State Line Inn.

*Our Mission To make new disciples of Jesus Christ*

*Our Vision To invite and reach out to our neighbors to encounter God, grow in faith and serve in Christ's love*

### Worship Service Volunteers

February 3rd

Worship Assistant: Matt Ellis  
Acolyte: Hunter T.  
Greeters: John C. & Angie B.  
Nursery: Julia S. & Dixie E  
Tech Booth: Jonathan

February 10<sup>th</sup>

Worship Assistant: Mark Semler  
Acolyte: Hunter T.  
Greeters: Sherrill C. & Matt E.  
Nursery: Christy G. & Hillary G.  
Tech Booth: Jonathan

February 17<sup>th</sup>

Worship Assistant: Keric Ellis  
Acolyte: Hunter T.  
Greeters: Darlene H. & Curtis B.  
Nursery: Tabitha H. & Gwenelle T.  
Tech Booth: Jonathan

February 24<sup>th</sup>

Worship Assistant: Ellen Avey  
Acolyte: Hunter T.  
Greeters: Judy E. & Gary R.  
Nursery: Julia S. & Dixie E.  
Tech Booth: Jonathan



### Anniversaries

13 John & Judy Scott



### Birthdays

1 Pat Kelley  
6 Julia Socks  
13 Darlene Hostetter  
13 Jane Flenner  
19 Gary Rhoe  
27 Erin Kitner

### Church Calendar

February 1<sup>st</sup>

2:00PM – Faith and Health

February 6<sup>th</sup>

9:30AM – Women meet to quilt

6:30PM – Youth Group

8:30PM – Praise Band Practice

February 7<sup>th</sup>

9:30AM – Bible Study with

Pastor Ruth

February 8<sup>th</sup>

2:00PM – Faith and Health

February 13<sup>th</sup>

9:30AM Women meet to quilt

6:30PM – Youth Group

8:30PM – Praise Band Practice

February 14<sup>th</sup>

9:30AM – Bible Study with

Pastor Ruth

February 15<sup>th</sup>

2:00PM – Faith and Health

February 16<sup>th</sup>

8:00AM – Men's Breakfast at

State Line Ruritan

February 18<sup>th</sup>

Presidents' Day



February 19<sup>th</sup>

6:30PM – Leadership Team Meeting

February 20<sup>th</sup>

9:30AM Women meet to

Quilt

6:30PM – Youth Group

8:30PM – Praise Band

Practice

February 21<sup>st</sup>

9:30AM – Bible Study with

Pastor Ruth

February 22<sup>nd</sup>

2:00PM – Faith and Health

February 27<sup>th</sup>

9:30AM Women meet to

quilt

6:00PM – Outreach Team

Pack and Deliver food

6:30PM – Youth Group

8:30PM – Praise Band

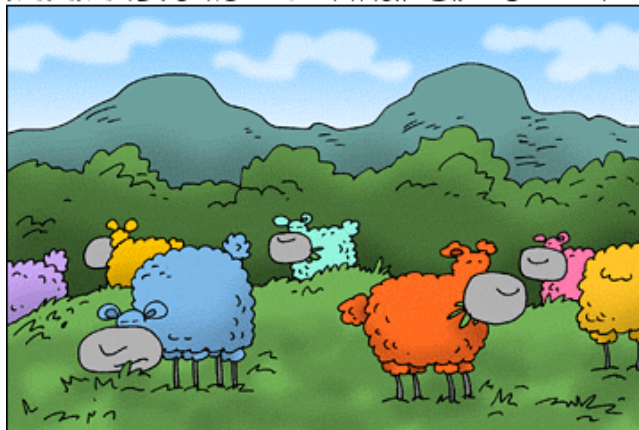
Practice

February 28<sup>th</sup>

9:30AM – Bible Study with

Pastor Ruth

REVERENDFUN.COM COPYRIGHT BIBLE GATEWAY



Thanks to Richard Germain (See Genesis 37:3-36) 09-13-2010

WHERE JOSEPH'S COAT CAME FROM

# For Fellowship & Community

## Witness

By Angie Scheerer

Good Lord, you have caught  
my attention  
captured my imagination  
stolen my heart.

Less would have done as well ---  
Sunsets and snowfalls  
Butterflies and apple trees  
Waterfalls, shooting stars  
Kisses, giggles  
Thunder and lightning  
Fireflies, dragonflies  
Lions, tigers, and bears  
Oh my ---  
So many I can hardly begin to list.  
Do you never weary  
Of glorious display?



## Outreach Monthly Food Needs

- 🥫 Jar of peanut butter
- 🥫 Jar of jelly
- 🥫 Canned chicken or tuna
- 🥫 Can of soup
- 🥫 Canister of quick oats
- 🥫 Pasta sides packet Box of pasta
- 🥫 Jar of pasta sauce
- 🥫 Bottle of syrup
- 🥫 Complete pancake mix
- 🥫 6-pack Ramen Noodle Soup
- 🥫 Can of vegetables
- 🥫 Chicken or Tuna Helper boxed meals



## IMPACT! Harrisburg Announces Pastoral Team

IMPACT! Harrisburg is a dynamic city-wide movement that begins with a vital merger of current ministries and then becomes a multisite diverse community of believers who meet the physical and spiritual needs of our neighbors, invest in the lives of our neighbors, and offer hope to our neighbors. Bishop Jeremiah Park is excited to announce the first step in living into this vision. Pastors Kris Sledge and Deb Port will be two of the pastors of this newly forming faith community.

### Pastor Kristopher "Kris" Sledge

Kris who has lived and studied in the city of Harrisburg, will move back to the city effective July 1, to take on this new appointment. His love and passion for urban ministry are self-evident. Kris was recently identified as a high potential church planter and moved into extension ministry to accept an internship at The Gathering in St. Louis, Mo. There he is learning from the pastors and staff of one of the fastest growing urban United Methodist Churches in the US. Kris is humbled and excited to begin serving as the Lead Pastor of this new faith community. He loves to drink coffee, travel, and connect with new people. His beautiful wife, Hannah, also serves in ministry.



# CHURCH NEWS

## Leadership Team Highlights

The team met on Tuesday, January 15<sup>th</sup>:

- Pastor Chris Renner's first report was given. He will typically be in the office Tuesday through Thursday weekly. He and his wife, Bea, feel welcome here.
- Treasurer's report was reviewed.
- Temperature settings for heat and AC were determined. The settings are marked at each thermostat.
- A traits and skills profile for our next pastor was completed. It was discussed with District Superintendent Charles Salisbury on the evening of Sunday, January 20<sup>th</sup>.
- Guiding Principles were reviewed.
  - Regarding Financial Principles, only authorized persons (staff & ministry leaders) should incur cost of supplies / services following guidelines in the policy. Vouchers (available in the office) should accompany receipts for purchase to receive reimbursement.
  - Regarding Facility Use, use of the building (fellowship hall, sanctuary, etc.) for non-church activities require prior approval of the pastor or the Leadership Team. Once approved, the event will be added to the office calendar. Complete facilities use guidelines are available in the office.
- February 19<sup>th</sup> at 6:30pm is the next meeting. All are welcome.

## Leadership Team for 2019

Class of 2019:

Angie Baer  
John Courtney  
Ellen Kennedy

Class of 2020:

Ellen Avey, *Chairperson*  
Dick Walck  
Robbie Socks

Class of 2021:

Judy Ellis  
Keric Ellis, *Lay Delegate to AC*  
Gwenelle Trivette

## Ministry Leaders

*Encounter God*

**Worship Coordinator:** Ellen Avey  
**Praise Team Leader:** Travis Ware  
**Hospitality/Safe Sanct.:** Sherry Rhoe

*Grow in Faith*

**Children's Ministry:** Dixie Ellis  
**Youth Ministry:** Jonathan Trivette

*Serve in Christ's Love*

**Outreach Team:** Gary Baer  
**Building & Grounds:** Ed Fiery  
**Ladies' Fellowship:** Dianne Socks

**Sunday Worship:** 10:15AM  
**Fellowship Time:** 10:00AM  
**All-Ages Sunday School:** 9:00AM  
**Office Hours:** 9:00AM-2:00PM  
Tuesday & Thursday

**Interim Pastor:** Chris Renner  
**Email:** CRenner@susumc.org  
**Administrative Assistant:** Mary Thomas  
**Email:** StateLineUMChurch@gmail.com  
**Website:** www.statelineumc.com

STATE LINE UMC  
287 EAST AVENUE  
STATE LINE, PA 17263  
717-597-4217